

WOMEN IN STEM*

Section 2.

GRADUATE EDUCATION OF WOMEN IN STEM* DISCIPLINES AT U.S. UNIVERSITIES

COMPILED BY
THE ASSOCIATION FOR WOMEN IN SCIENCE

*STEM = SCIENCE, TECHNOLOGY, ENGINEERING,
AND MATHEMATICS

AWIS

ASSOCIATION FOR WOMEN IN SCIENCE

A NETWORK, A RESOURCE, A VOICE

MAJOR SOURCES FOR DATA

- NSF SESTAT Scientists and Engineers Statistical Data System <http://www.nsf.gov/statistics/sestat/>
- NSF S&E DEGREES, 1966-2006 NSF 08-321 Oct 2008
Research Doctorates Awarded to U.S. Citizens and Permanent Residents, by Race/Ethnicity, Gender, and Fine Field of Study: 1997-2006
- Survey of Earned Doctorates 1977-2007
<http://www.norc.org/SED/SED+2007+Summary+Report+Tables.htm>

FIG 2-1 DOCTORAL EDUCATION OF WOMEN IN STEM [1976-2006]

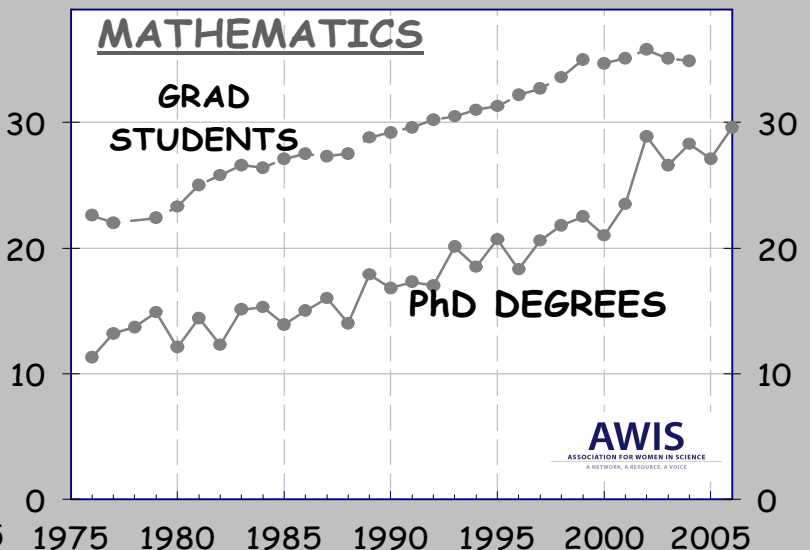
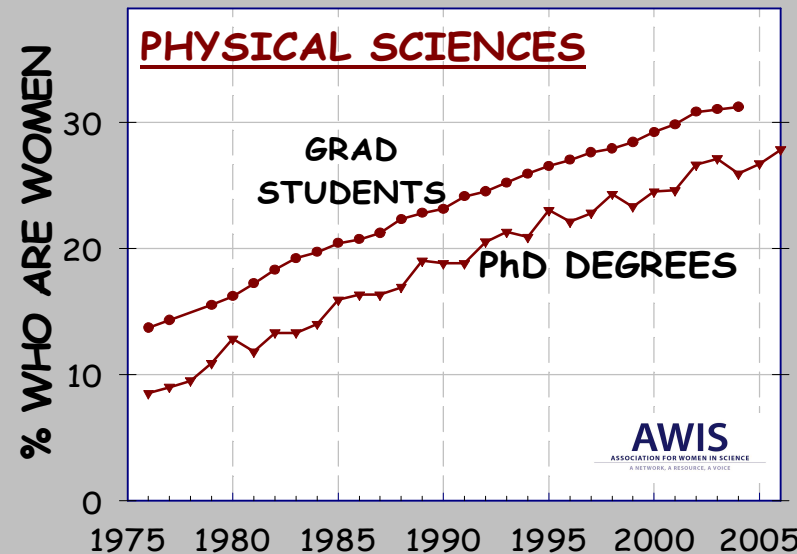
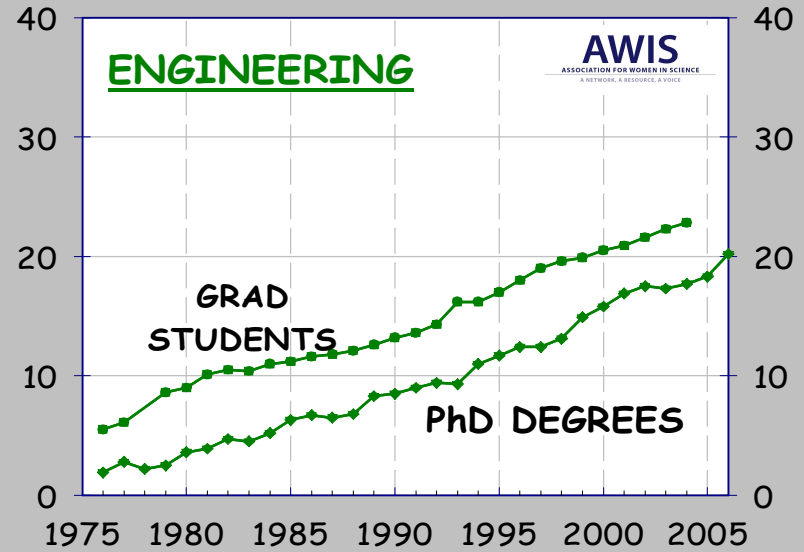
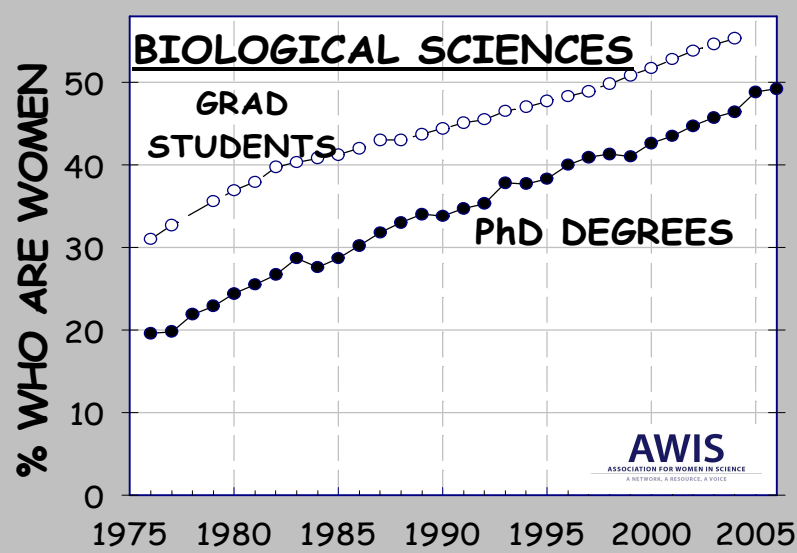


FIG 2-2 PhDs AWARDED TO U.S.CITIZENS & PERMANENT RESIDENTS [1997-2006]

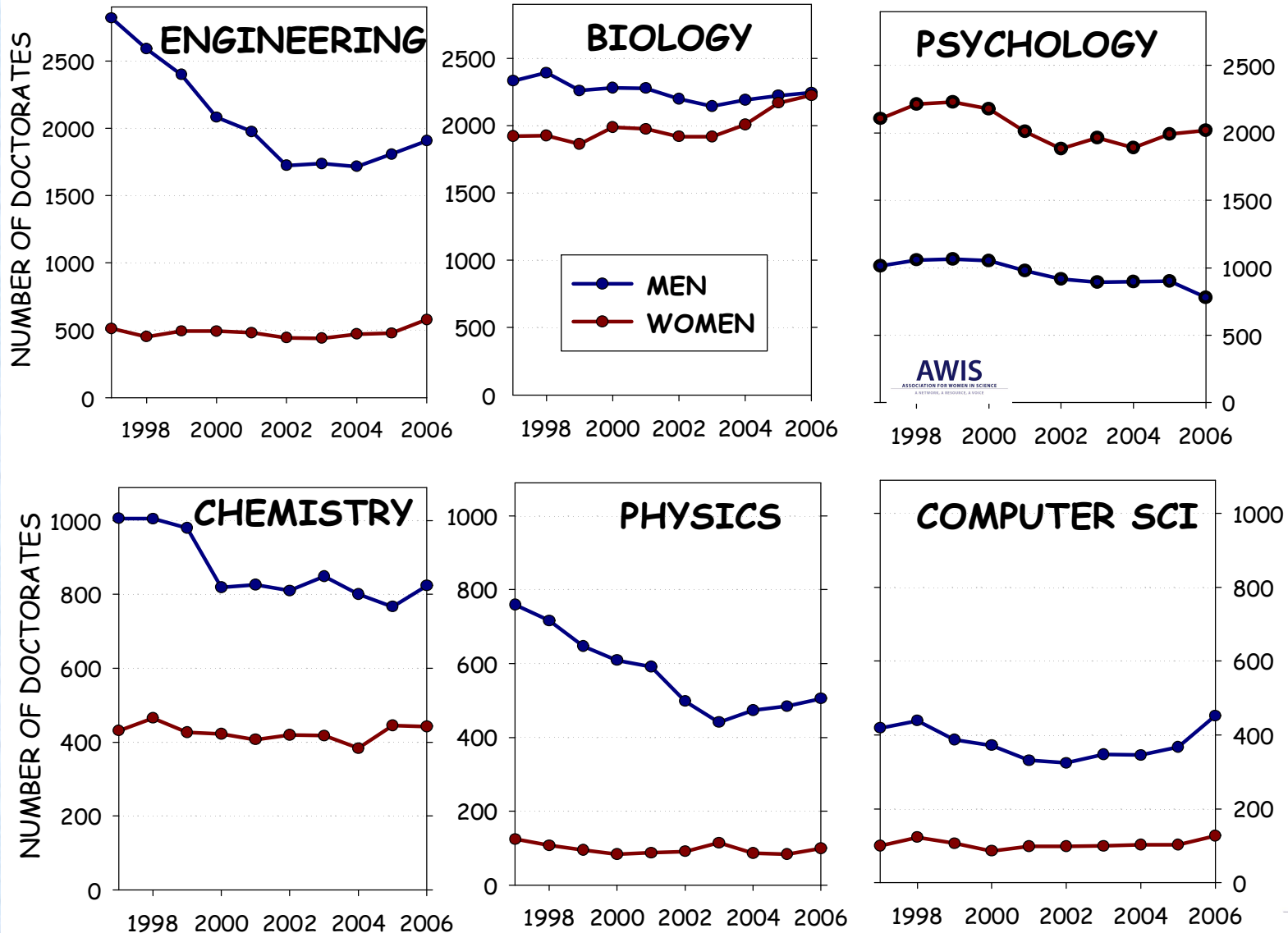
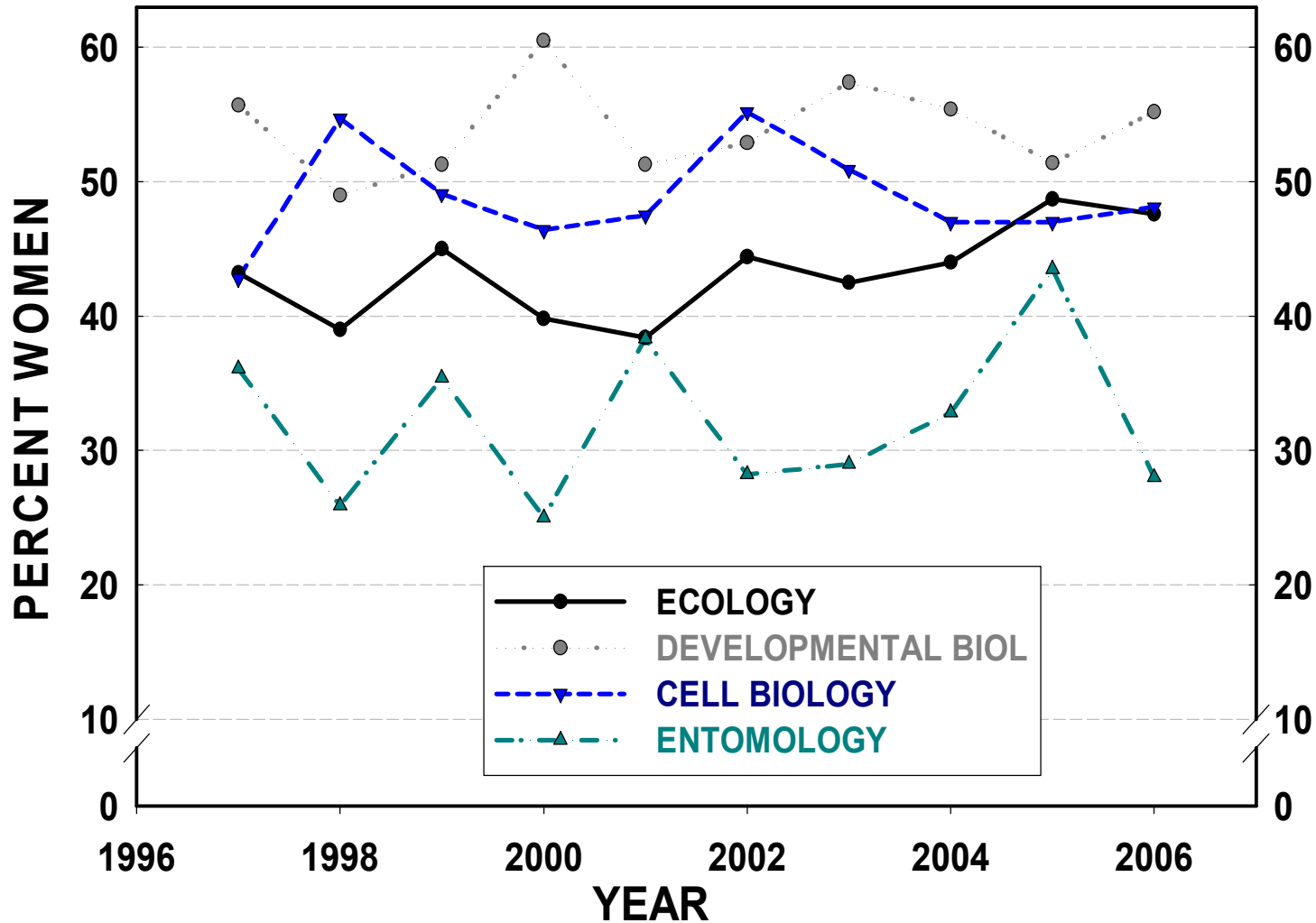
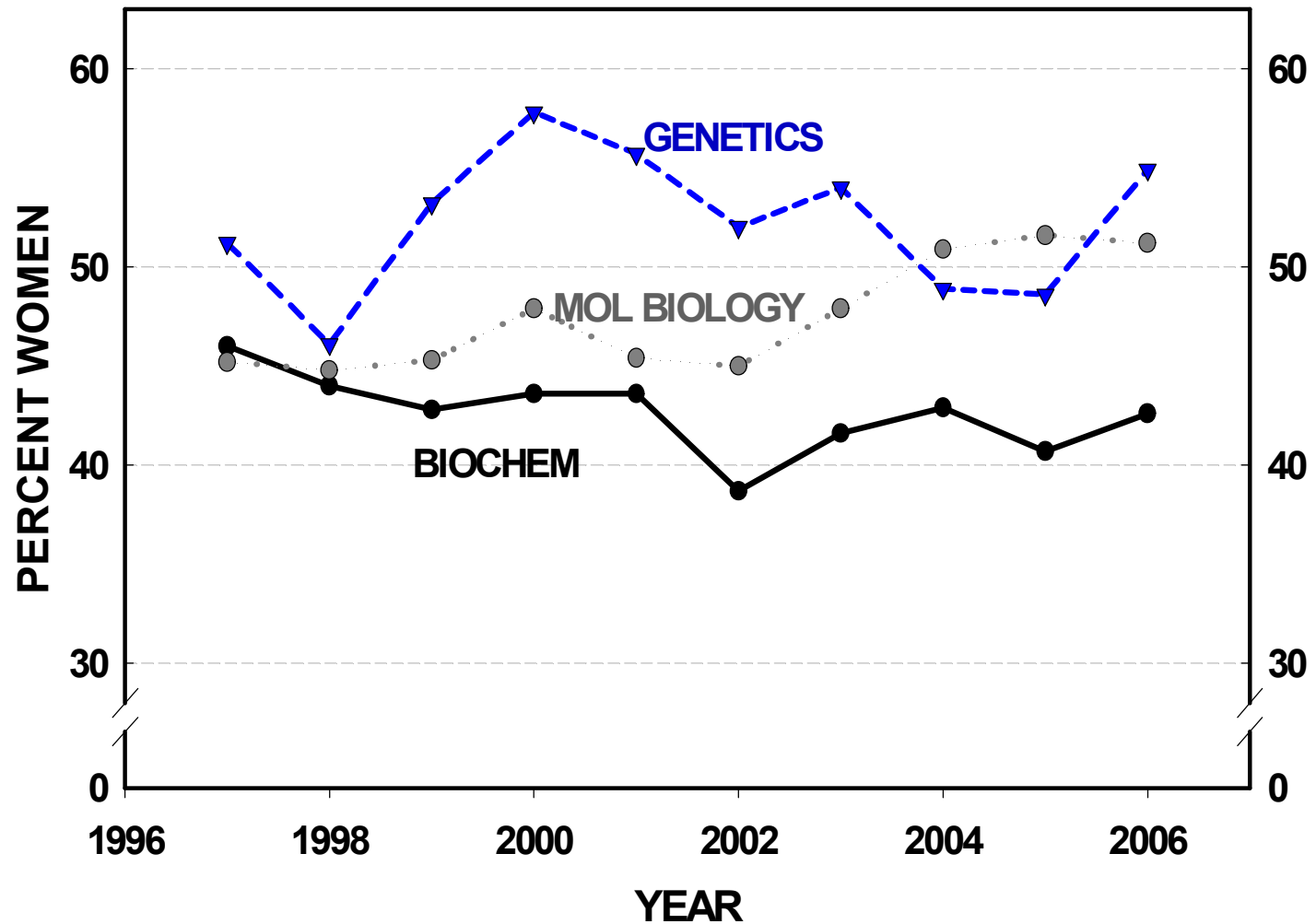


FIG 2-3 PROPORTION OF WOMEN WITH PhDs IN BIOLOGY DISCIPLINES



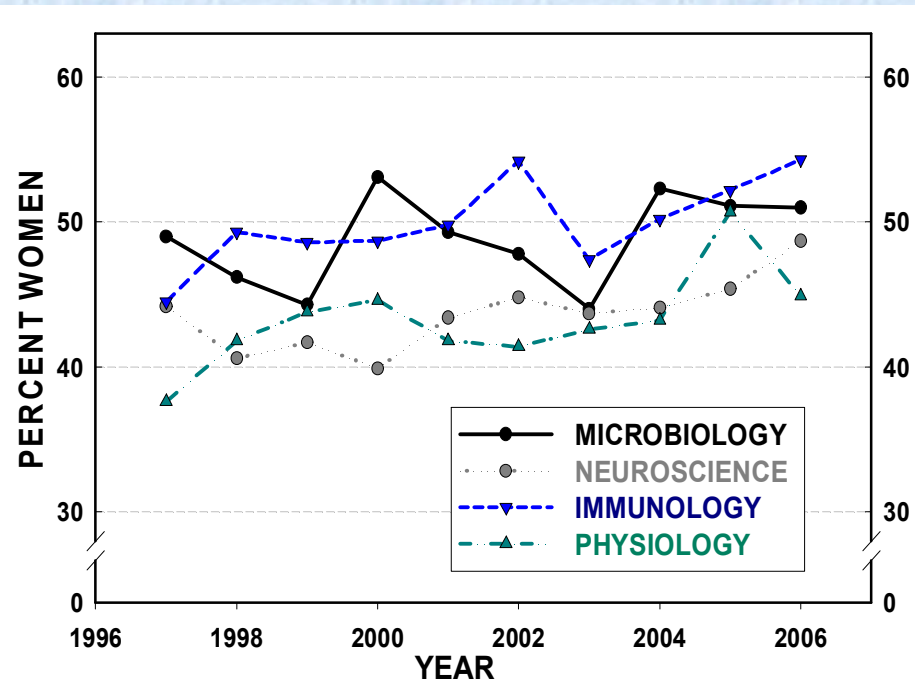
PhDs awarded in the U.S. to U.S. citizens and permanent residents.
Data for those fields with more than 100 PhDs/year.

FIG 2-4.1 PROPORTION OF WOMEN AMONG PhDs IN BIOMEDICAL FIELDS



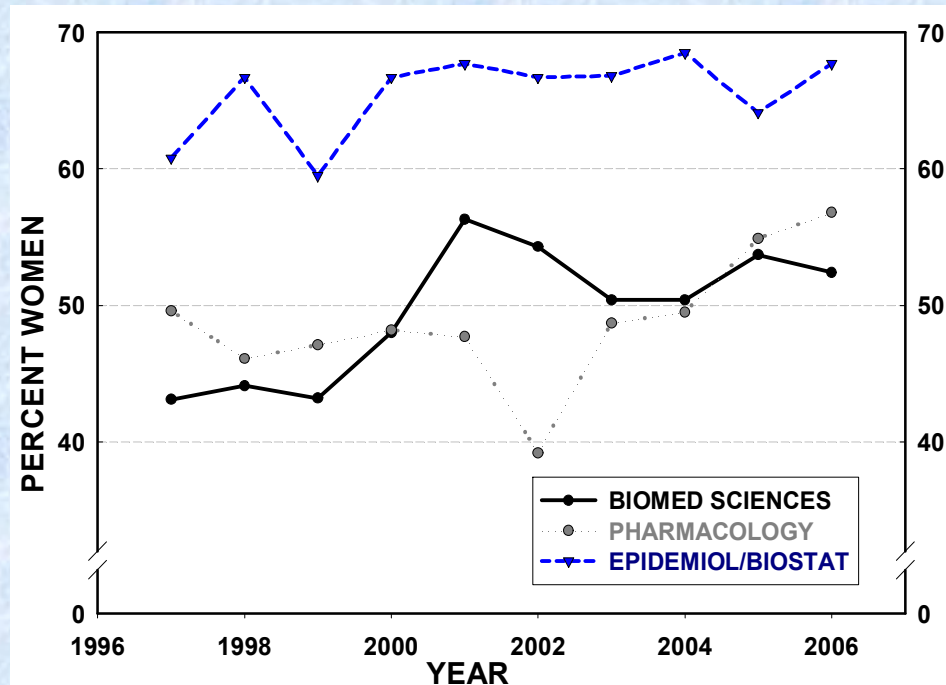
*PhDs awarded in the U.S. to U.S. citizens and permanent residents.
Data for those fields with more than 100 PhDs/year.*

FIG 2-4.2 PROPORTION OF WOMEN AMONG PhDs IN BIOMEDICAL FIELDS



PhDs awarded in the U.S. to U.S. citizens and permanent residents.
Data for those fields with more than 100 PhDs/year.

AWIS
ASSOCIATION FOR WOMEN IN SCIENCE
A NETWORK, A RESOURCE, A VOICE

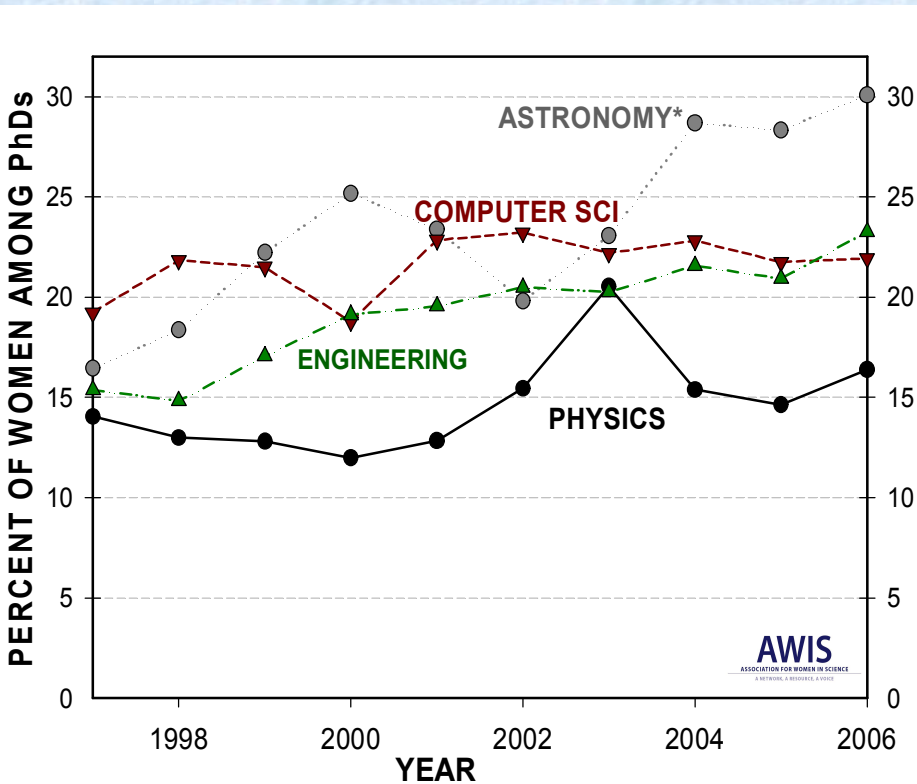


PhDs awarded in the U.S. to U.S. citizens and permanent residents.
Data for those fields with more than 100 PhDs/year.

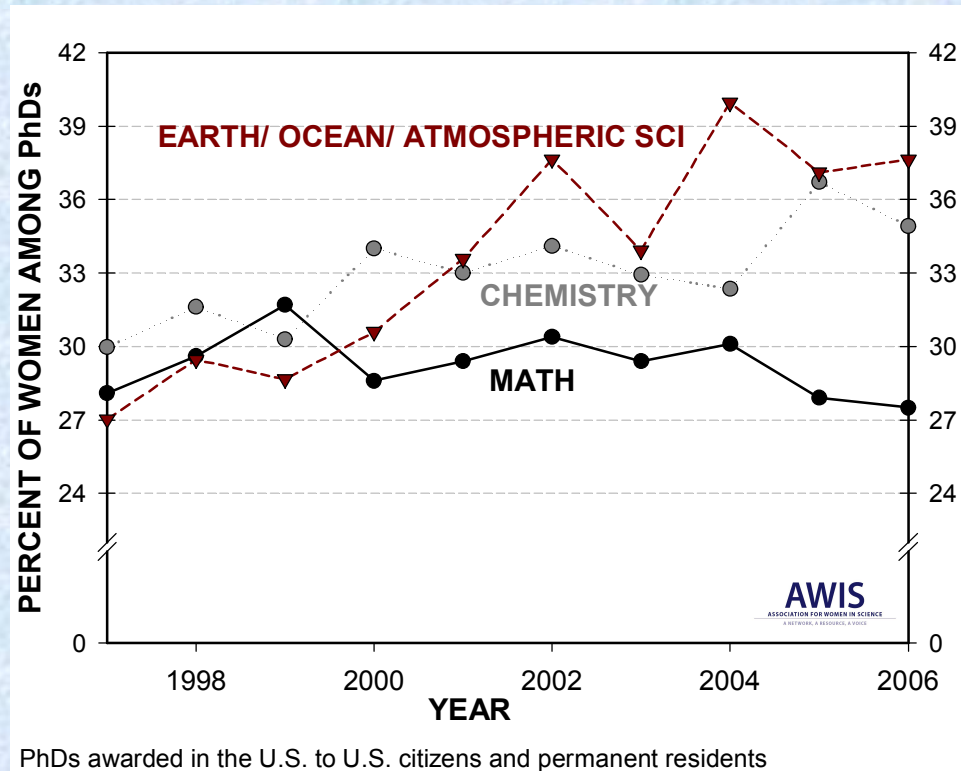
AWIS
ASSOCIATION FOR WOMEN IN SCIENCE
A NETWORK, A RESOURCE, A VOICE

In most biomedical disciplines (which form the “basic science” departments of health schools) women have earned close to half of the U.S. doctorates since the early 1990s.

FIG 2-5. PROPORTION OF WOMEN WITH PhDs IN ENGINEERING, PHYSICAL SCIENCES & MATH [U.S. citizens and Permanent Residents]



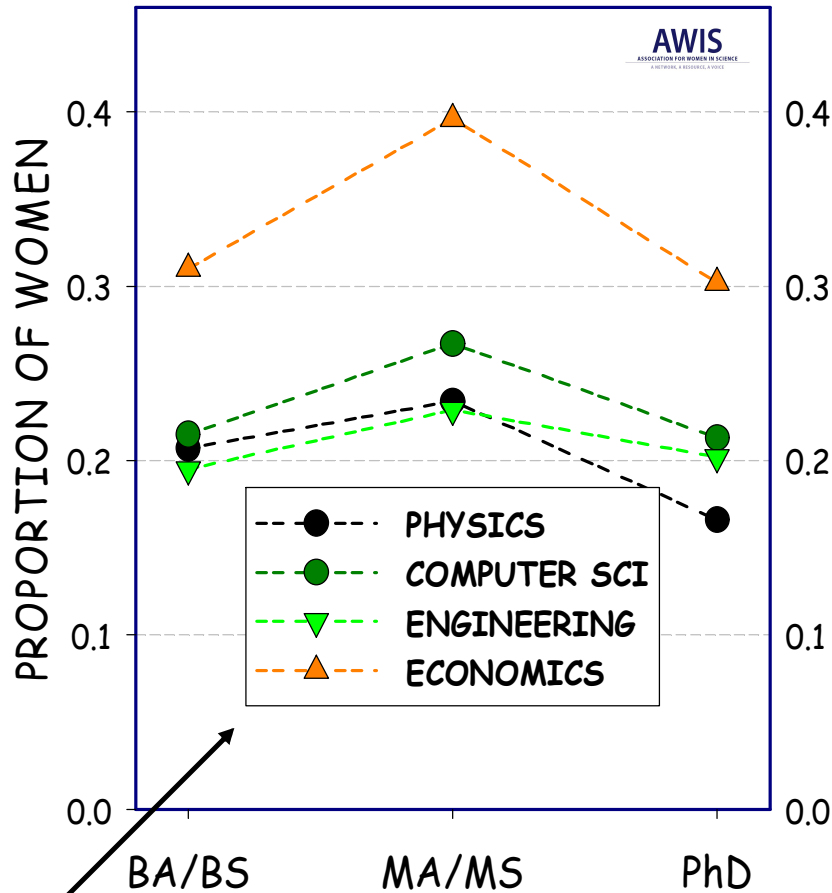
PhDs awarded in the U.S. to U.S. citizens and permanent residents
 * Less than 200 PhDs/year awarded in astronomy



PhDs awarded in the U.S. to U.S. citizens and permanent residents

Many of these fields have an increasing proportion of women among PhDs, but that is primarily due to fewer male U.S. citizens or permanent residents earning PhDs.

FIG 2-6. RETENTION OF WOMEN IN STEM GRADUATE PROGRAMS



There are few women in these fields, but the retention of women in these graduate programs is similar to that for men.

